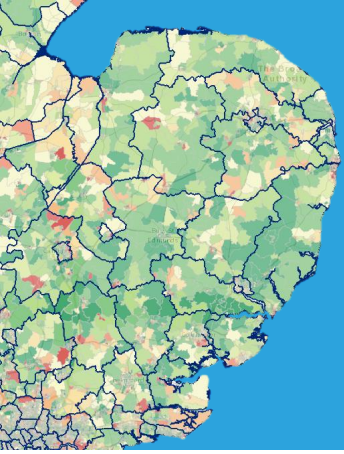


Transport-related Social Exclusion in the East

TRANSPORTEAST

TRANSPORT FOR THE
NORTH



Transport-related Social Exclusion in the East

What is TRSE?

Transport-related social exclusion (TRSE) means that transport issues have a fundamental impact on everyday life and limit the ability to fulfil everyday needs. This could mean being unable to access childcare or good job opportunities, facing poverty and financial hardship because of transport costs, or facing significant stress and anxiety from using the transport system as part of everyday life.

How is TRSE analysed?

TFN analysed national and local risk variations utilising the following statistics:

Accessibility analysis

Source: DfT journey time statistics

Four Accessibility Domains: **employment**, **education**, **health care** and **key services**

Output: Indicators measuring overall levels of access, journey times and number of destinations

Vulnerability analysis

Source: English Indices of Deprivation

Process: Each element of index is reweighted to match the four accessibility domains.

Output: Indicators of vulnerability to social exclusion that are matched to transport impacts

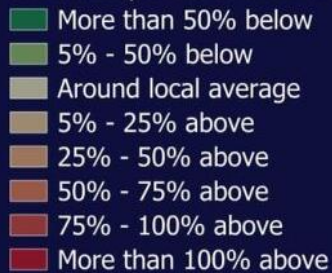
TRSE RISK

Transport-related Social Exclusion in the East

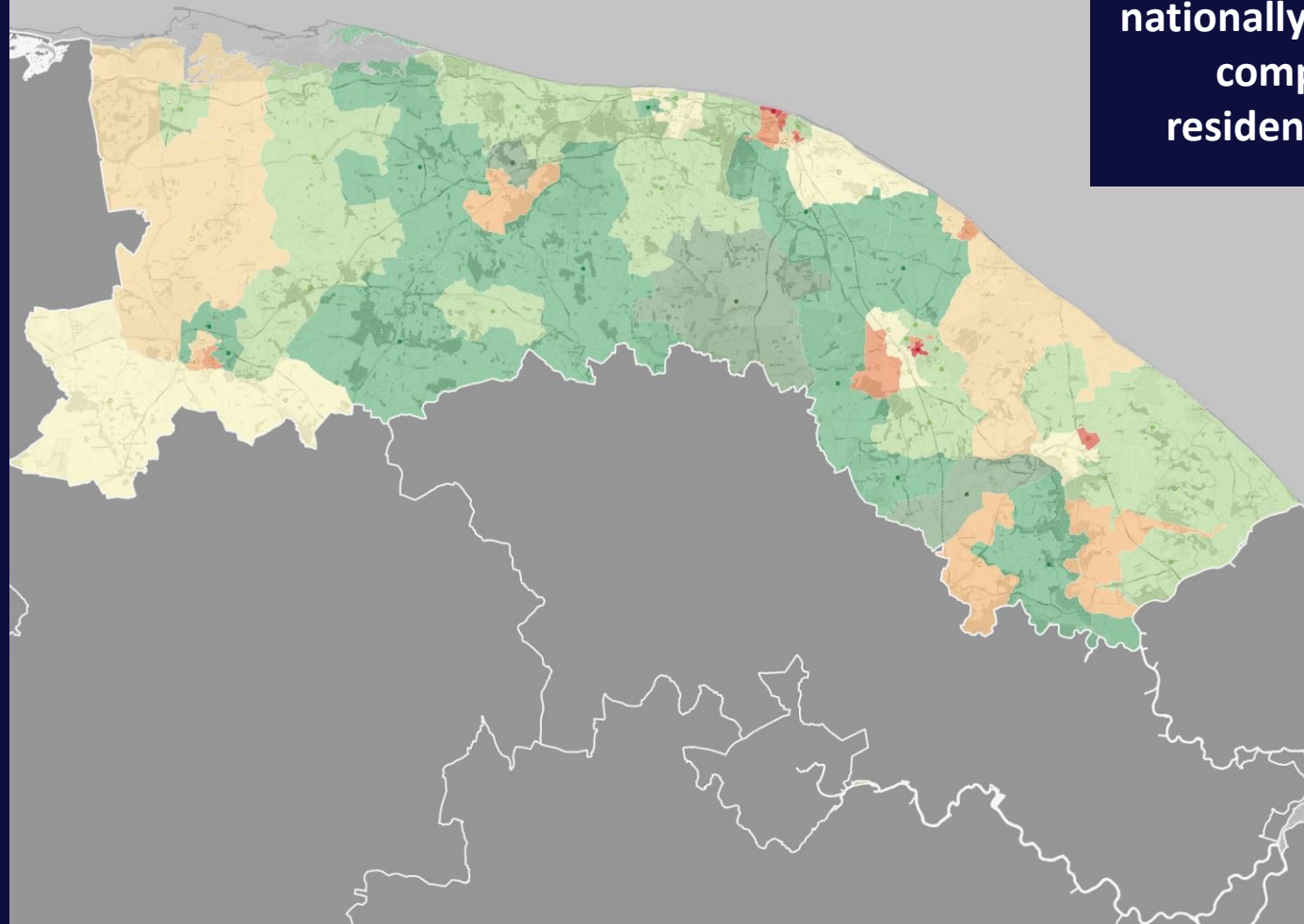
Local Risk Variations: North Norfolk

- Approximately 1,500 residents
(census LSOA centre point)

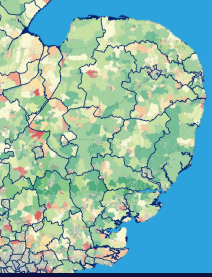
Risk compared with local average



TRSE is where residents have poor access to opportunities, key services, and community life, and face excessive financial, time and wellbeing impacts from their everyday trips. This map shows how the risk of TRSE varies in **North Norfolk**, compared with the area average. A higher risk means that a greater proportion of residents are likely to be affected by TRSE, and that those effects are likely to be more severe.



In North Norfolk, 40.8% of residents live in neighbourhoods with a nationally high risk of TRSE, compared with 18% of residents across England.



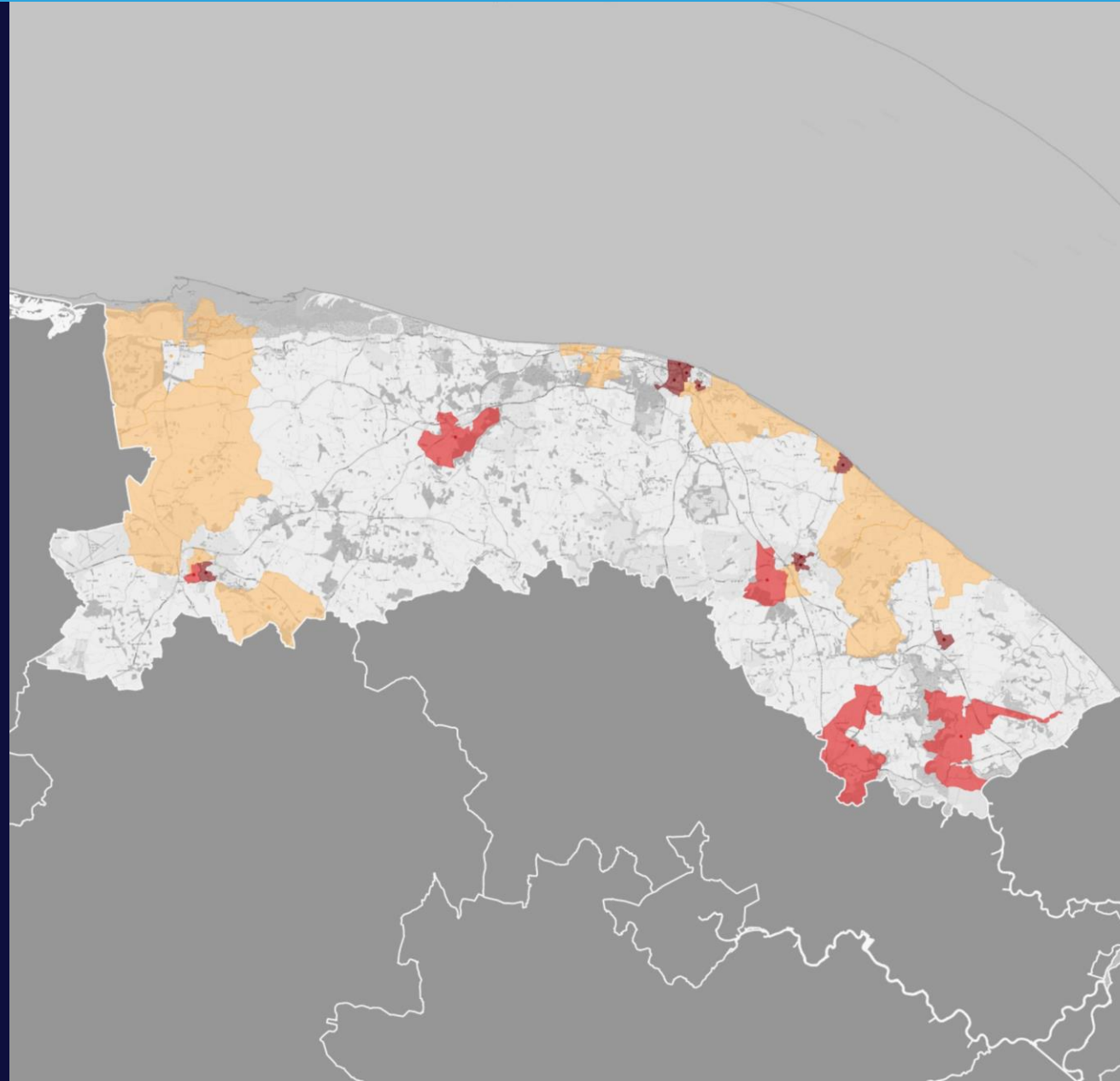
Transport-related Social Exclusion in the East

National Risk Category: North Norfolk

• Approximately 1,500 residents (census LSOA centre point)

- 3: Higher risk (8% of England)
- 4: High risk (6% of England)
- 5: Very high risk (4% of England)

TRSE is where residents have poor access to opportunities, key services, and community life, and face excessive financial, time and wellbeing impacts from their everyday trips. This map shows areas of **North Norfolk**, where the risk of TRSE is higher than most other local areas of England. In these areas, residents are more likely to be affected by TRSE, and these effects are likely to be more severe when compared with most other areas of England.



In **North Norfolk**, **42,799 (40.8%)** residents live in neighbourhoods with a nationally high risk of TRSE, compared with 18% of residents across England.

This area ranks **34 out of 296** Local Authority Districts for the overall level of TRSE risk. Underlying this, this area ranks:

Access challenges: 4 out of 296

Vulnerability challenges: 165 out of 296

The risk level for North Norfolk varies between the different elements of TRSE:

- Employment: 36 out of 296
- Education: 17 out of 296
- Health: 21 out of 296
- Basic services: 102 out of 296

The risk level also varies across different neighbourhoods in North Norfolk. This varies from **10% to 64%** of the maximum risk level for any neighbourhood in England.



Transport-related Social Exclusion in the East

Local Authority District (*name and/or boundary changed after 2019)	Total population (2018)	Population in areas with a nationally high risk of TRSE	% of population in areas with a nationally high risk of TRSE
Tendring	146561	114018	77.8%
Great Yarmouth	99336	69639	70.1%
King's Lynn and West Norfolk	151383	95976	63.4%
Waveney*	118433	71390	60.3%
North Norfolk	104837	42799	40.8%
Thurrock	174341	67523	38.7%
Castle Point	90376	33410	37.0%
Breckland	139968	50870	36.3%
Forest Heath*	65807	18083	27.5%
Braintree	152604	40043	26.2%
Maldon	64926	14376	22.1%
Epping Forest	131689	27803	21.1%
St Edmundsbury*	113238	23677	20.9%
Babergh	92036	18303	19.9%
Colchester	194706	33129	17.0%
Suffolk Coastal*	131028	21879	16.7%
Ipswich	136913	22107	16.1%
Harlow	87067	13191	15.2%
Norwich	140573	19728	14.0%
Brentwood	77021	10152	13.2%
Rochford	87368	10108	11.6%
Broadland	130783	14276	10.9%
South Norfolk	140880	14648	10.4%
Mid Suffolk	103895	8175	7.9%
Basildon	187199	12275	6.6%
Chelmsford	178388	11478	6.4%
Southend-on-Sea	183125	7950	4.3%
Uttlesford	91284	1603	1.8%